

Wind for Schools



Larry Flowers

G4 Wind

October, 2016

A training and implementation center to educate engineers in wind applications:

- Modeled after the DOE Industrial Application Centers
- Develop a long-term program on wind energy applications; NREL/DOE provides technical and financial support for 3 – 5 year start up phase
- Provide data analysis, technical assistance and implementation support for Wind for Schools projects
- Become the “go-to place” for technical assistance for school and community wind applications
- Train engineers to enter the wind industry



NORTHERN ARIZONA UNIVERSITY



FOUNDED 1899



South Dakota State University

You can GO ANYWHERE from here.®

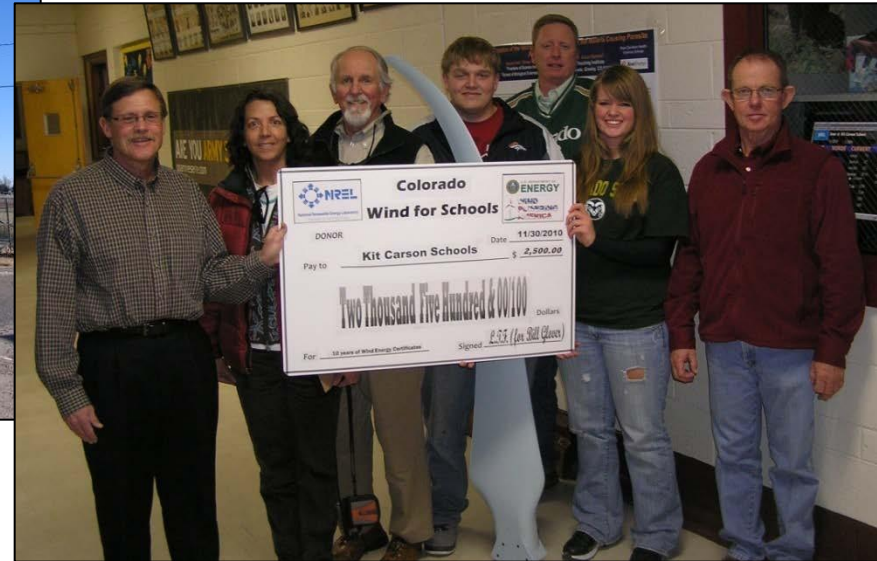
Installs a wind turbine and implements appropriate educational programs

- Supports the installation of the wind turbine through
 - Provides a location to install the turbine
 - Obtain support within the school system
 - Supports getting all local zoning approvals
 - Works with WAC to raise funds and get donations for the project
 - Help with the installation of the turbine
- Attend teacher training programs
- Implement educational programs at the school(s) as appropriate
- Supports the maintenance of the wind turbine
- Makes data from the turbine available to other schools across the country



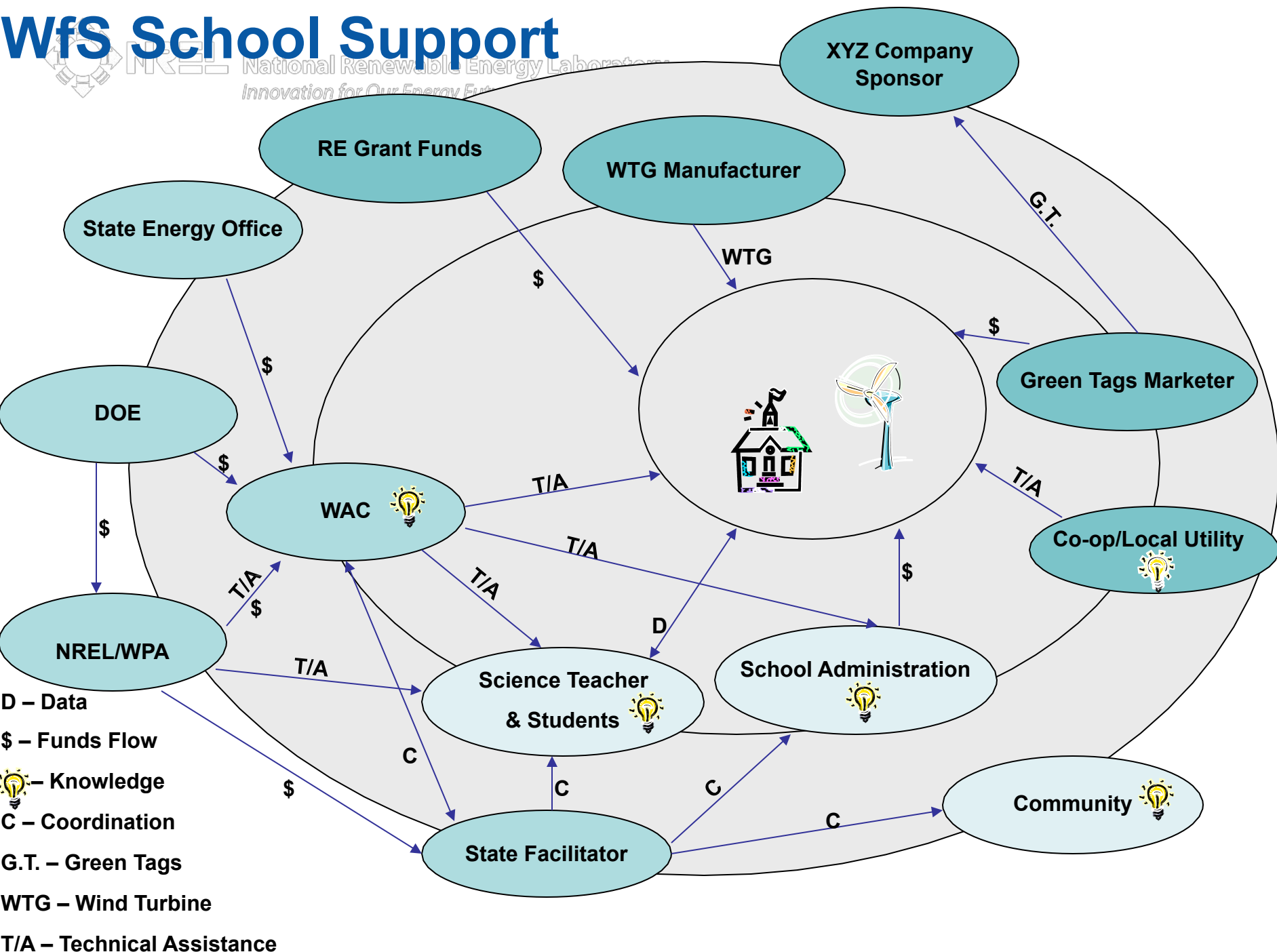
Wind for School system installed at Greenbush High Schools, Kansas.
PIX # 16245 Photo Credit Josh Cochran, Greenbush, KS

Colorado

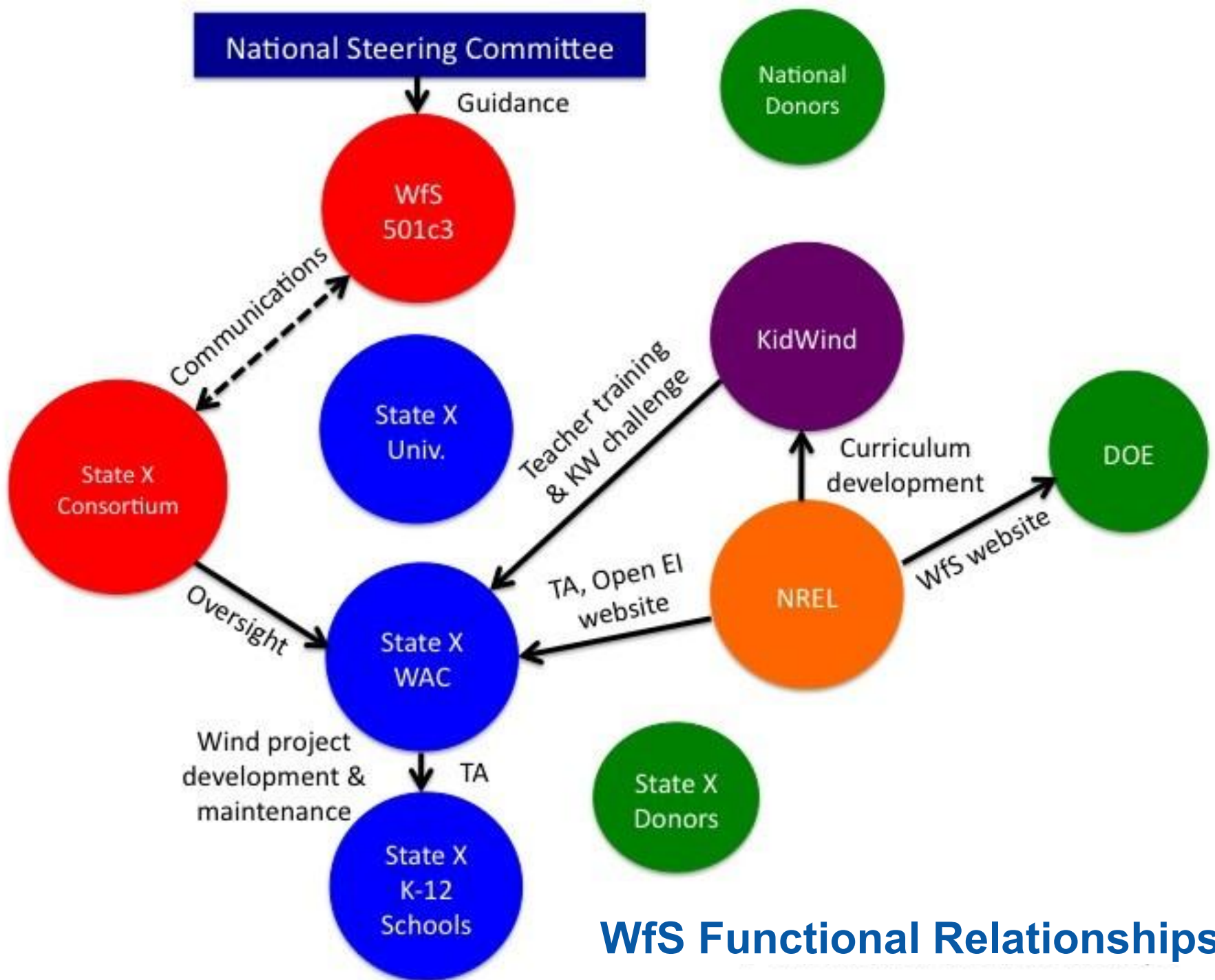


“These wind turbine projects represent another important way all regions of Colorado are participating in our New Energy Economy. Educating today’s young people about the benefits and mechanics of renewable energy systems prepares them for a wealth of future opportunities and demonstrates the crucial role our rural communities can play in mapping out a new energy future for Colorado and the country.” - Colorado Gov. Bill Ritter

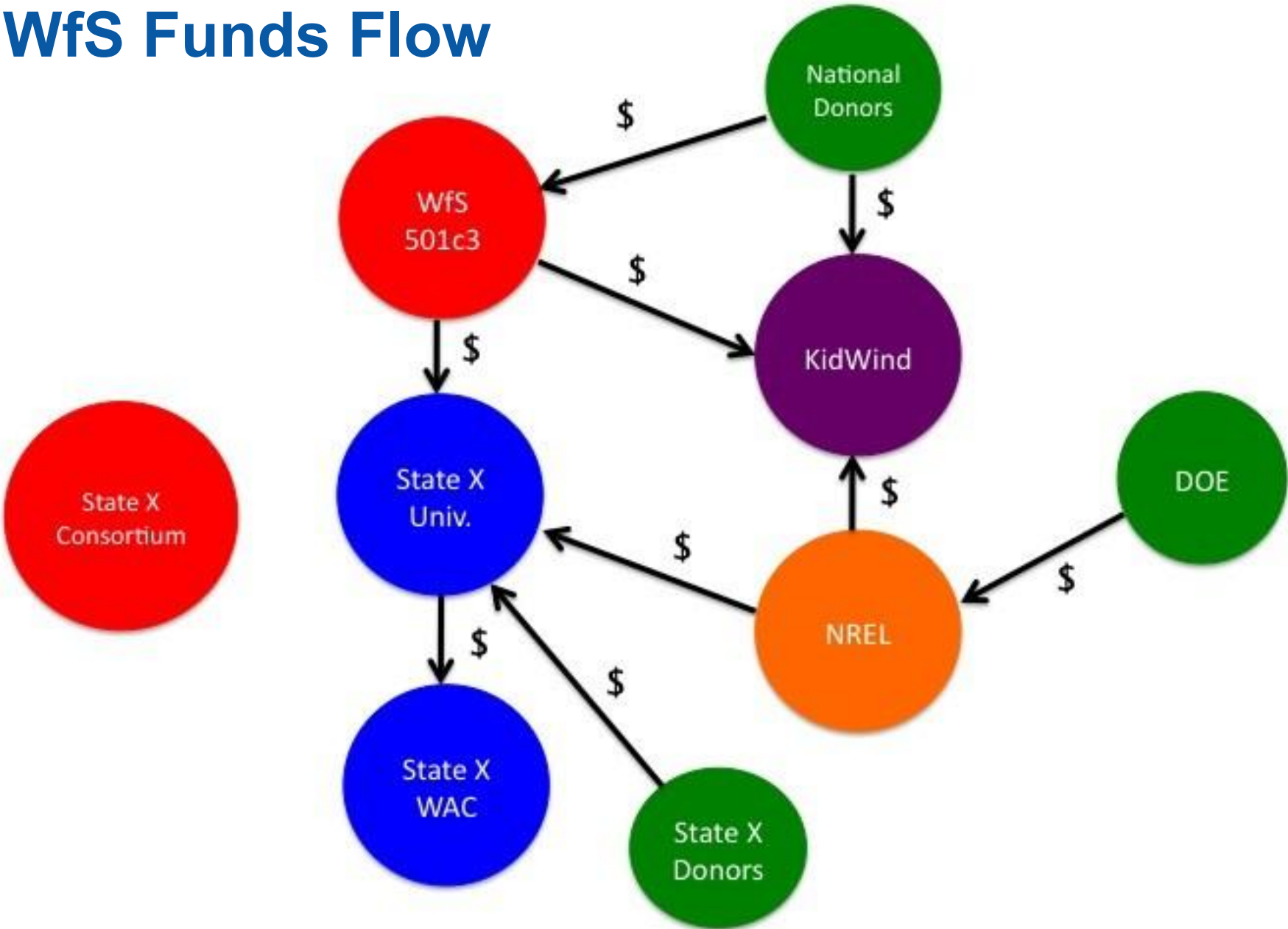
WfS School Support



- D – Data
- \$ – Funds Flow
- 💡 – Knowledge
- C – Coordination
- G.T. – Green Tags
- WTG – Wind Turbine
- T/A – Technical Assistance



WfS Funds Flow



Challenges

- Establishing State Consortia
- Raising Support from National and State Sources
- Tailoring WAC activities to State Needs
- Developing & Implementing K-12 Curricula & KW Challenges
- Maintaining School Turbines
- * Expanding to Additional States



Milford, Utah

Carp Ventem



larryflowers777@gmail.com