



JASON BALL | DIRECTOR OF BUSINESS DEVELOPMENT
LINCOLN PARTNERSHIP FOR ECONOMIC DEVELOPMENT
1135 M STREET, SUITE 200 | LINCOLN, NE 68501
P: 402.436.2374
JBALL@SELECTLINCOLN.ORG | WWW.SELECTLINCOLN.ORG

WIND ENERGY PROJECTS IN LINCOLN





Federal Legislation

Transmission Policies & Siting Regulations

Renewable Electricity Standards

25% RES by 2025

Renewable Energy Production Tax Credit

Income tax credit of 2.2 cents/kilowatt-hour for the production of
electricity from utility-scale wind turbines

American Wind Energy Association

http://www.awea.org/issues/federal_policy/index.cfm



Project Characteristics

Typical Size:

100,000 – 300,000 sq ft

100 – 500 employees

\$13/hr - \$17/hr [\$27,000 - \$35,000]

20 acre – 50 acre site

\$20million – \$40million total investment

Manufacture all component types:

Nacelles | Blades | Towers



Project Drivers

Labor

Site Characteristics

Access



Project Drivers

Labor

Site Characteristics

Access



Labor

The workforce in Lincoln is...

Highly Educated

Highly Skilled

Highly Productive

Stable

Comparatively Low Cost



Relative Wages

Wage Comparisons:

(Lincoln as the Base 100%)

<u>Community</u>	<u>All</u>	<u>Production</u>
Denver	116	112
Milwaukee	115	116
Kansas City	112	118
Iowa City	110	112
Dallas Austin	110	102
Huntsville (AL)	109	107
Huntsville (AL)	108	113
San Antonio	104	109
Oklahoma City	103	96
Springfield (MO)	100	104
Lincoln	100	100



Unemployment

2012	September 2012	August 2012	September 2011
Nebraska	3.4%	3.8%	4.2%
Lincoln	3.0%	3.4%	3.8%
Omaha	3.8%	4.3%	4.7%
National	7.6%	8.2%	8.8%

Nebraska Department of Labor – Office of Labor Market Information

<http://networks.nebraska.gov/analyzer/default.asp> 10.22.2012



Customized Training

Southeast Community College

Customized curriculum

Adjunct professors

Nebraska Customized Worker Training Grant Program

\$500 - \$4,000 per net new hire

Formal program & on the job



Project Drivers

Labor

Site Characteristics

Access



Site Characteristics

Site numbers for identification purposes only.
Do not indicate ranking.

-  Site Locations
-  Floodway
-  100 Year Flood Plain
-  500 Year Flood Plain
-  Water Mains (Non Tappable)
-  Water Mains (Tappable)
-  Gas Transmission Lines
-  LES Transmission Lines
-  LES Distribution Lines
-  Sewer (Non Tappable)
-  Sewer (Tappable)
-  Interstate Highway
-  US Hwys / State Hwys
-  Arterial Streets
-  Other Roads
-  Railroad



Map created by Lincoln/Lancaster
County Planning Department





Site Characteristics

I-80 West Business Center





Site Characteristics

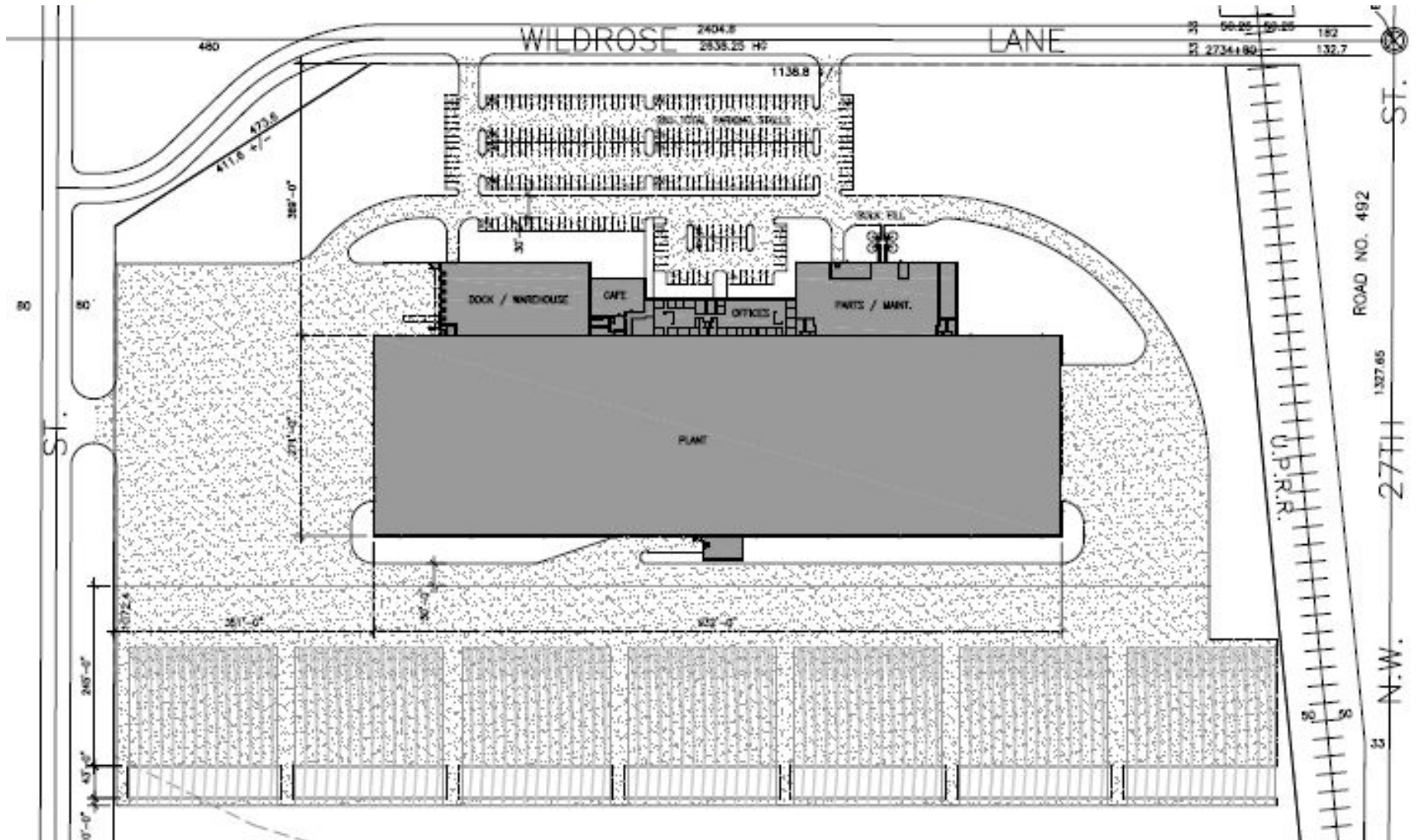
I-80 WEST LINCOLN BUSINESS CENTER NW 48th & I-80 Lincoln, NE







Site Characteristics





Project Drivers

Labor

Site Characteristics

Access



Access





Did Off?
Need Training?
800-665-1121

HYDRA-LOAD



Access

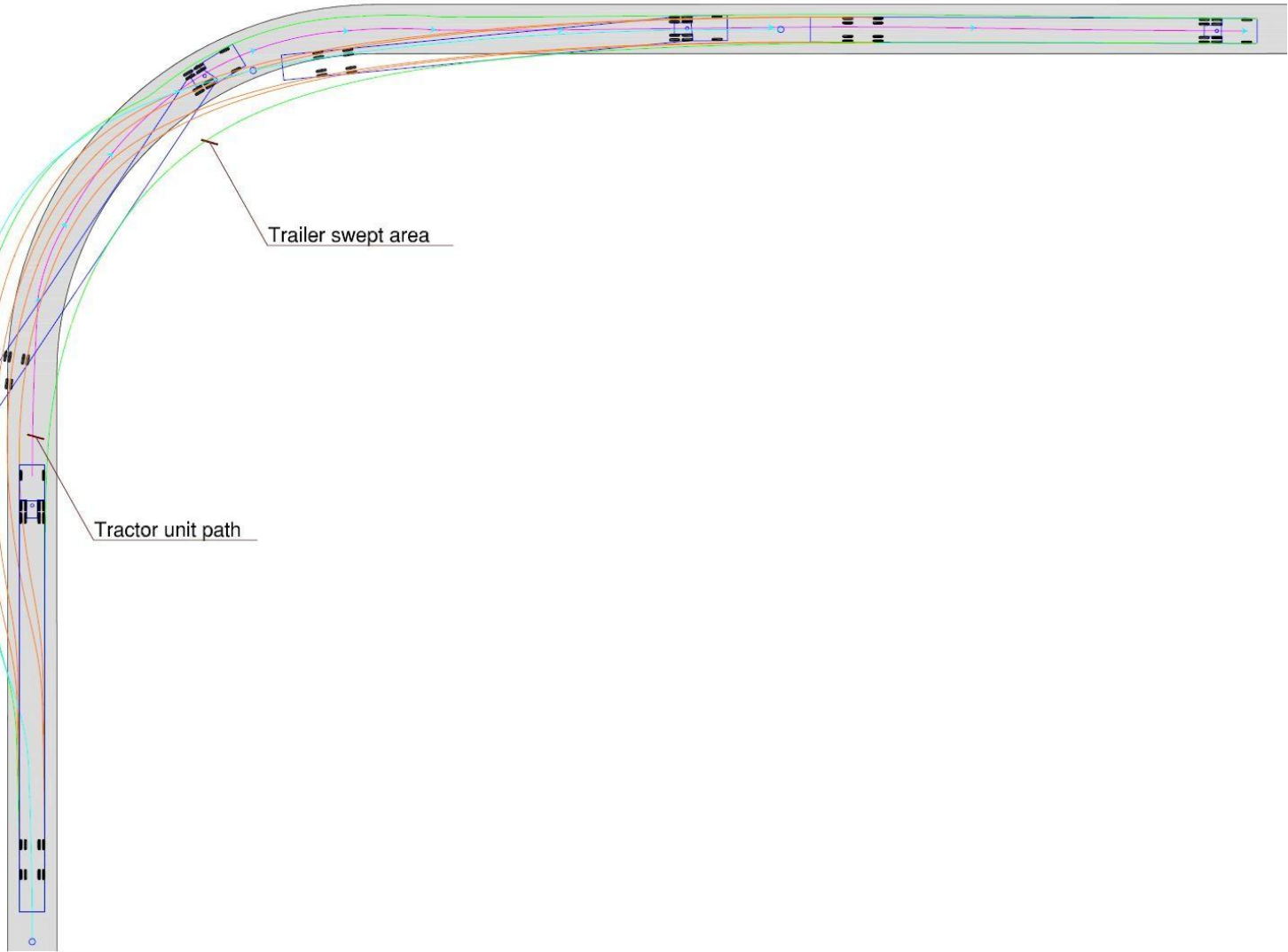


Blade tip swept area

Trailer swept area

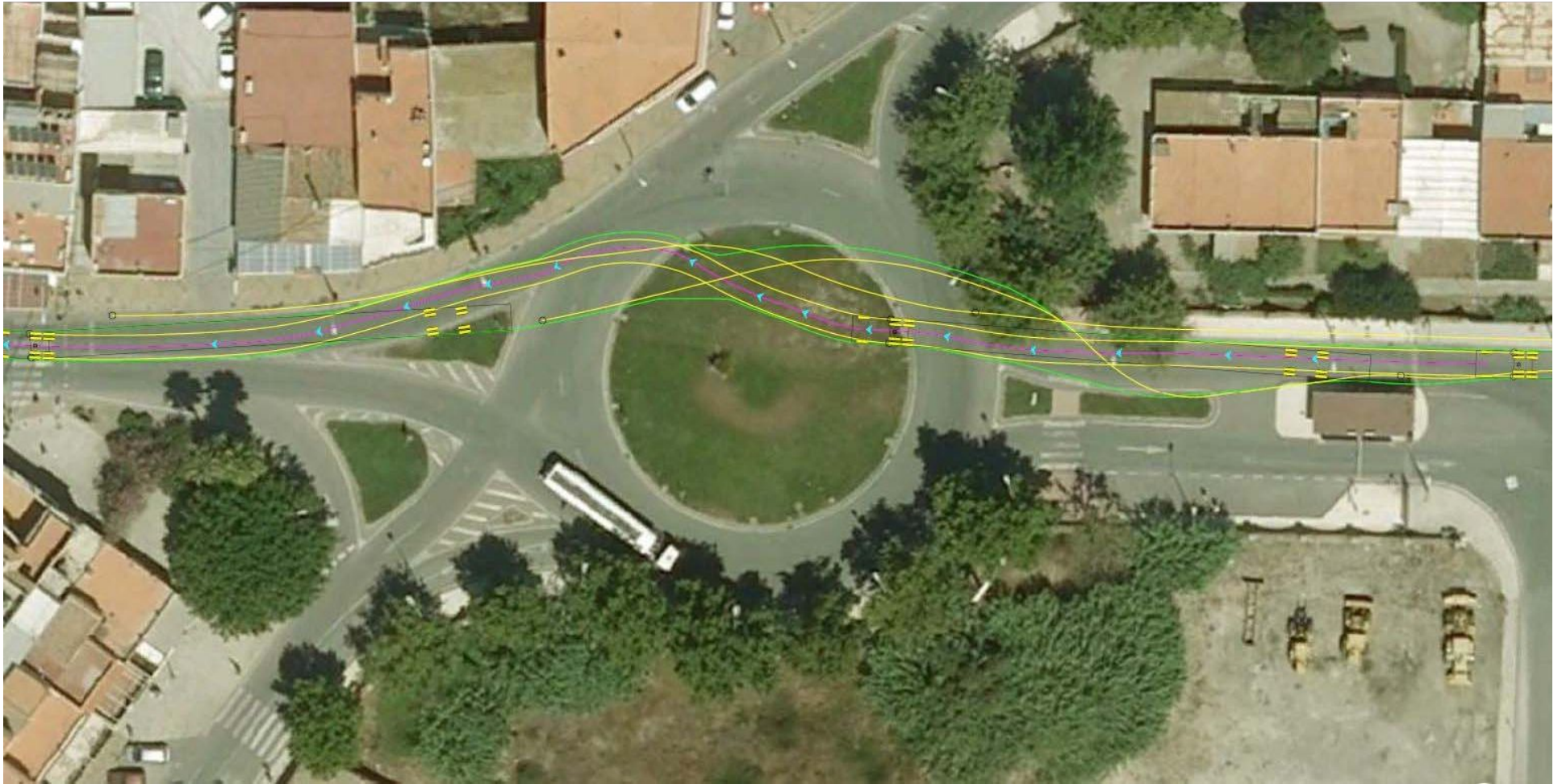
Rear wheels path

Tractor unit path





Access





Access





Access





JASON BALL | DIRECTOR OF BUSINESS DEVELOPMENT

LINCOLN PARTNERSHIP FOR ECONOMIC DEVELOPMENT

1135 M STREET, SUITE 200 | LINCOLN, NE 68501

P: 402.436.2374 | JBALL@SELECTLINCOLN.ORG | WWW.SELECTLINCOLN.ORG

